

Are we out of step? The legal services sector approach to ongoing competence

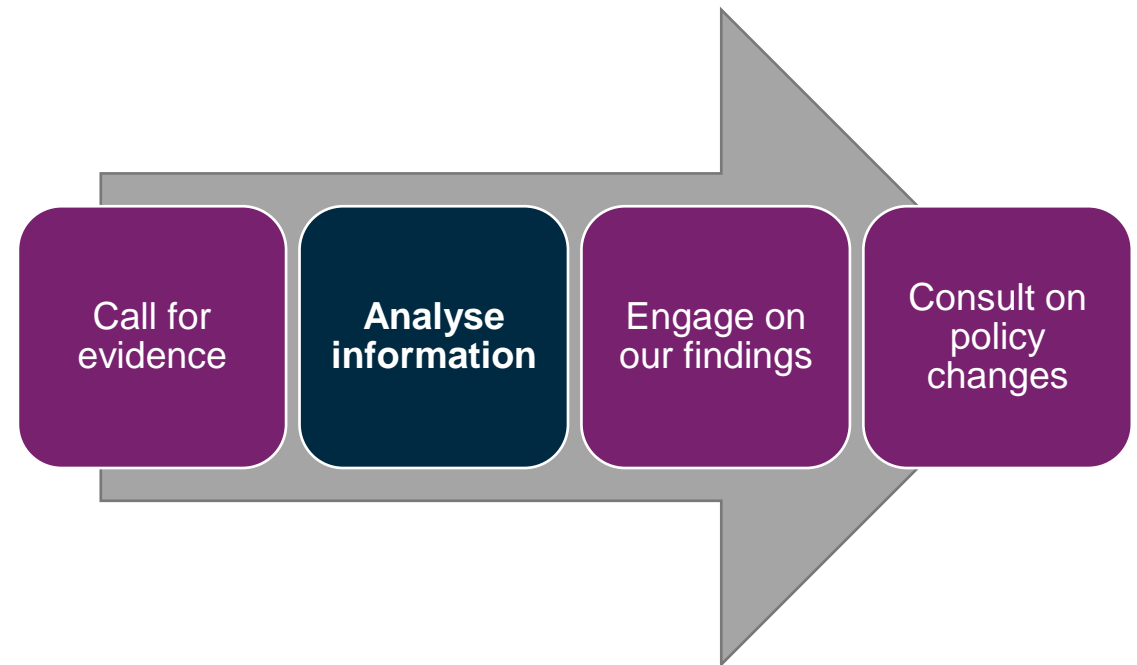
Margie McCrone
Regulatory Policy Manager
Legal Services Board

CLLS summer workshop, 29 July 2020

Our ongoing competence project

Aim: to explore whether legal regulators have the right frameworks in place to ensure the professionals they regulate remain competent throughout their careers

- **why are we doing this?**
- **our approach**
- **what phase we are in now**



Evidence base

- 50 stakeholder meetings
- 40 submissions
- ongoing desk research
- considering commissioning research or utilising our public panel



Office of the
Public Guardian



The Law
Society



Engineering
Council



Legal Aid
Agency

HM Land
Registry



professional
standards
authority
for Health and Social Care



Solicitors
Regulation
Authority



LEGAL
SERVICES
CONSUMER
PANEL



OISC



Civil Aviation
Authority



Law
Centres
Network



citizens
advice



LEGAL SERVICES
BOARD



BAR
STANDARDS
BOARD

Emerging themes

- legal services sector takes a light touch approach compared with other sectors
- consumers expect that there are robust quality checks in place
- testing of competence is variable and limited e.g. some accreditation, peer review, audit schemes in place
- there are some quality concerns in some areas e.g. criminal advocacy, immigration, conveyancing

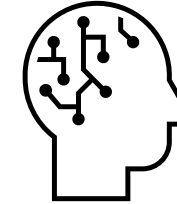
Emerging themes

- some legal professionals may require more support to maintain their competence
- CPD is not a proxy for competence – a more robust approach may be needed
- any intervention may need to be targeted to harm or risk of harm to vulnerable consumers
- a one-size fits all approach is unlikely to work

Competence assurance methods

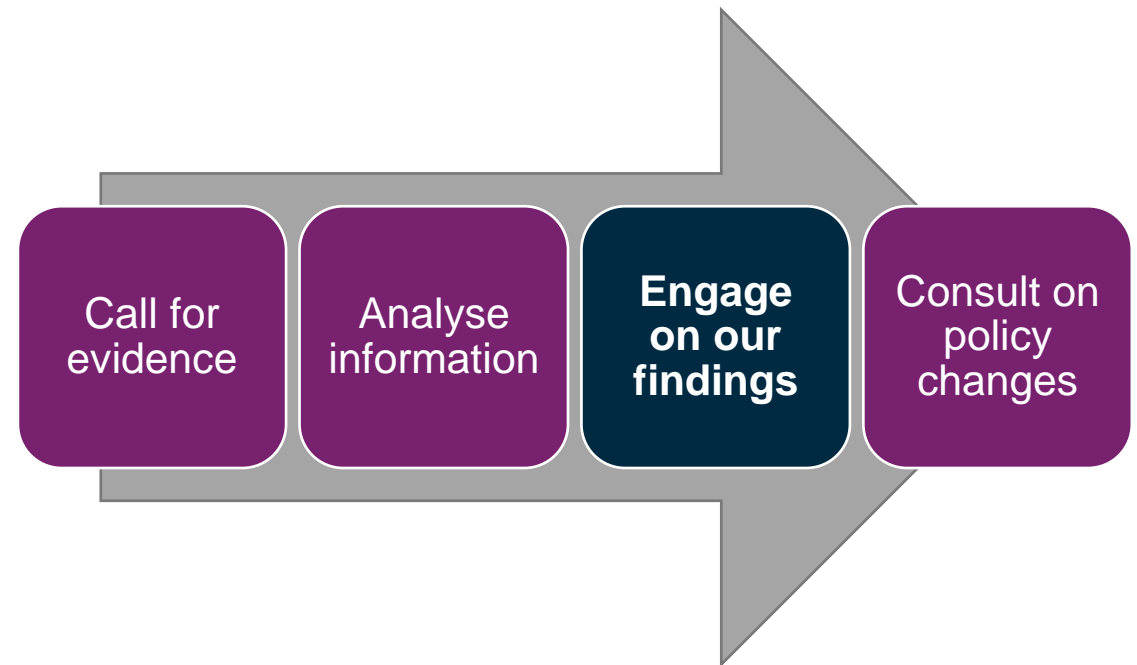
What are some of the methods used to assure competence in different sectors?

Peer review	Audits
Observation	Mandatory CPD modules
Mandatory training	Specialism
Accreditation and reaccreditation	Professional register
Reflection	Feedback models



Next steps for our project

- once we have finished reviewing all of the information shared with us, we will publish a report with our emerging findings
- we will engage widely on this so that as many views as possible can feed into any policy development, which would be subject to consultation




Thank you

Margie McCrone

margie.mccrone@legalservicesboard.org.uk

Legal Services Board

www.legalservicesboard.org.uk

 @LSB_EngandWal